



Haven 247



Live your way!



Haven 247

WIDTH: 12.30m

LENGTH: 17.09m

TOTAL: 247m²

4 3 2 2

TIMELESS ELEGANCE

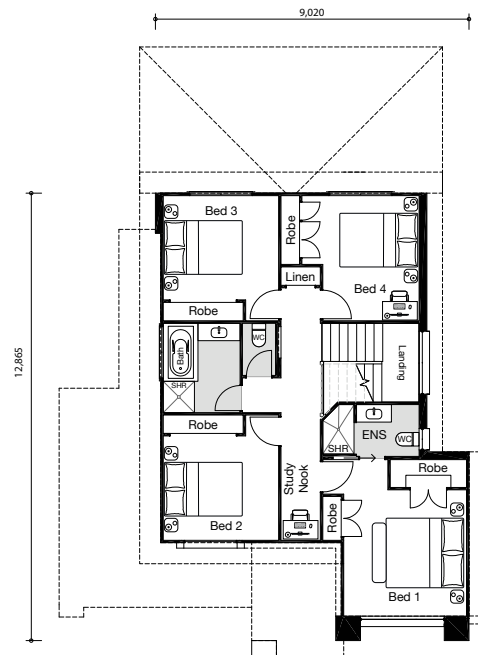
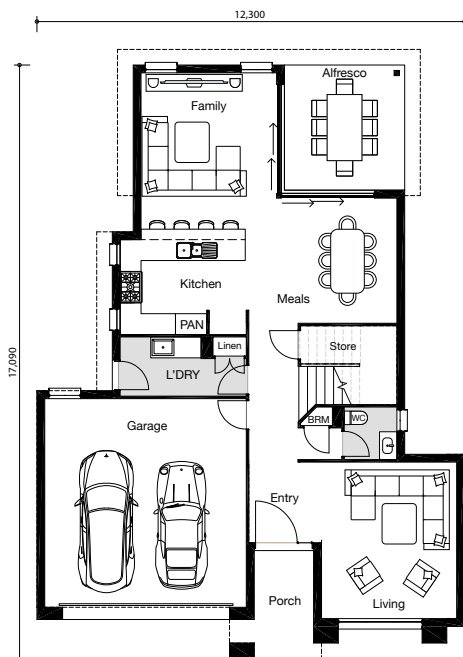
Classic and contemporary, this house plan offers street appeal and timeless elegance with its modern facade.

Ample storage options and multiple living spaces make this the perfect home for a busy family. Four bedrooms, including a master suite with walk-in robe and ensuite feature on the upper level.

Delight in a spacious kitchen with lots of storage and bench space, along with an open plan dining and family area that will be the heart of your family home.

An additional downstairs living area is provided for greater comfort and elegance.

BRINGING CUSTOM HOME DESIGNS TO LIFE



CLASSIC



ELITE



MODERN

“Customise our flexible floorplans”

OWNITHOMES.COM.AU

*This exclusive design is a product of Ownit Homes and is protected by copyright law. In accordance with Ownit Homes' policy of continued design improvement, we reserve the right to alter the plans, specifications and inclusions packages without prior notice. This floor plan is for illustration purposes only and does not form part of any contract. Ownit Homes QBCC #6479.

**OWNIT
HOMES**
EST.1972