



Beachview



Live your way!



Beachview

WIDTH: 14.80m
 LENGTH: 18.05m
 TOTAL: 367m²

4+1 3 2 3

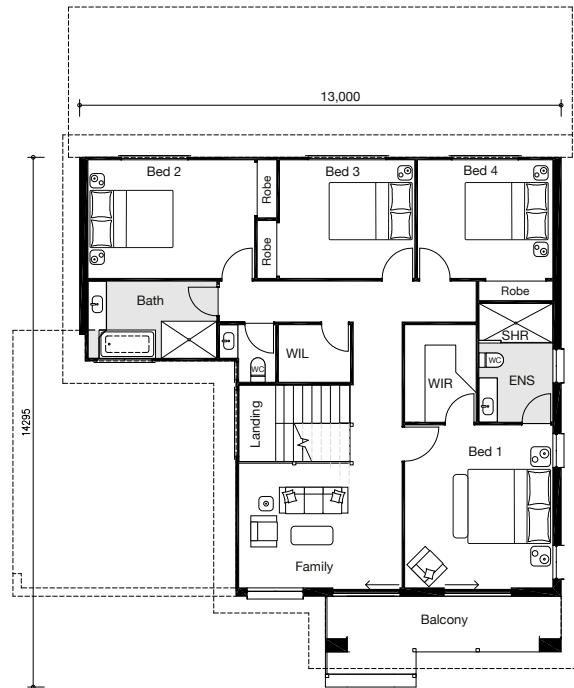
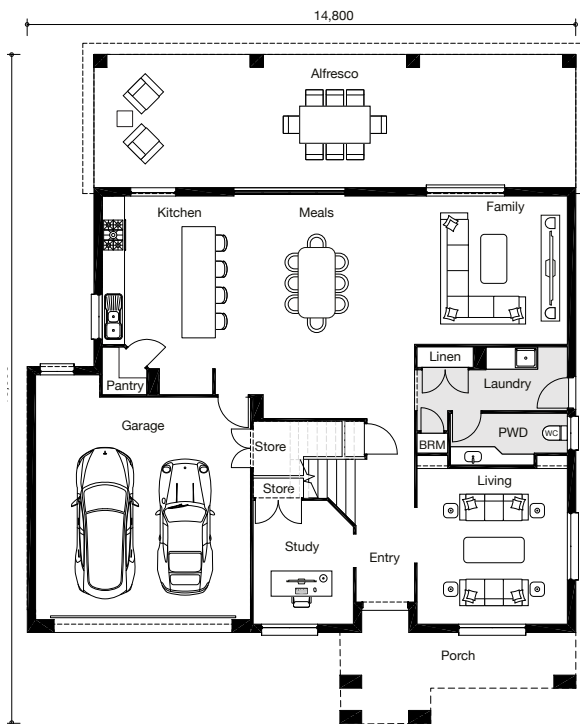
SURROUND YOURSELF WITH SPACE AND LIGHT

The Beachview stands out for its relaxed and luxurious beach style. Light fills the combined family, meals and kitchen area, which opens via sliding doors onto a spacious outdoor alfresco area perfect for relaxing and entertaining.

Upstairs the master bedroom feels like your own private retreat with a large walk-in closet, luxurious bath and sitting area. It seamlessly flows on to a feature front balcony, perfect for relaxing at the end of a long day.

Open plan, relaxed living is at your fingertips with the Beachview.

BRINGING CUSTOM HOME DESIGNS TO LIFE



“Customise our flexible floorplans”

OWNITHOMES.COM.AU

*This exclusive design is a product of Ownit Homes and is protected by copyright law. In accordance with Ownit Homes' policy of continued design improvement, we reserve the right to alter the plans, specifications and inclusions packages without prior notice. This floor plan is for illustration purposes only and does not form part of any contract. Ownit Homes QBCC #6479.

