



Sorrento Vogue



Live your way!



Sorrento Vogue

WIDTH: 12.30m

LENGTH: 21.24m

TOTAL: 373m²

5 3 2 3

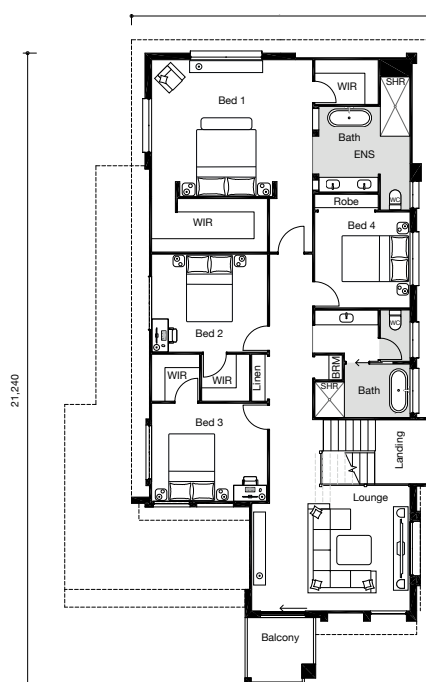
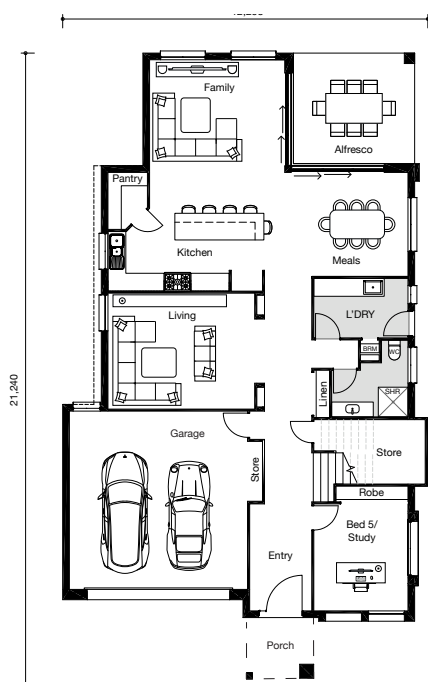
EASY FAMILY LIVING

The Sorrento showcases easy family living accentuated by luxurious design. Offering a thoughtful mix of open spaces with private living and study options, this home gives everyone their own space to create and unwind.

The kitchen is the hub of this home, surrounded by a dining and family area opening up via hidden stacker doors to a spacious alfresco area ensuring the connection between indoor and outdoor living. An additional bathroom, separate living room and study (or fifth bedroom) complete the lower floor.

With five bedrooms, three bathrooms, three large living areas along with plenty of storage, the Sorrento is a perfect fit for growing Queensland families.

BRINGING CUSTOM HOME DESIGNS TO LIFE



CLASSIC



ELITE



MODERN

“Customise our flexible floorplans”

OWNITHOMES.COM.AU

*This exclusive design is a product of Ownit Homes and is protected by copyright law. In accordance with Ownit Homes' policy of continued design improvement, we reserve the right to alter the plans, specifications and inclusions packages without prior notice. This floor plan is for illustration purposes only and does not form part of any contract. Ownit Homes QBCC #6479.

**OWNIT
HOMES**
EST.1972