



Milan



Live your way!



Milan

WIDTH: 8.30m
LENGTH: 18.76m
TOTAL: 229m²

3-4 3 2 1-2

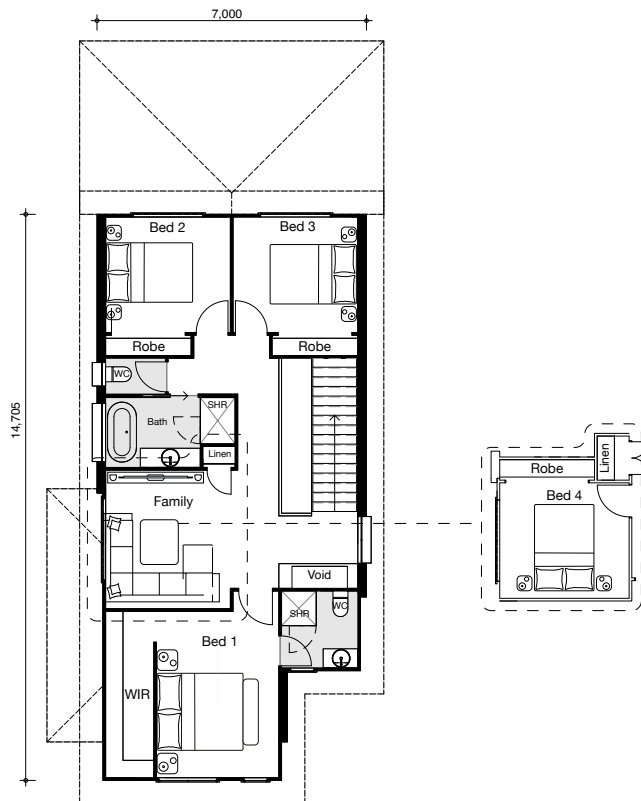
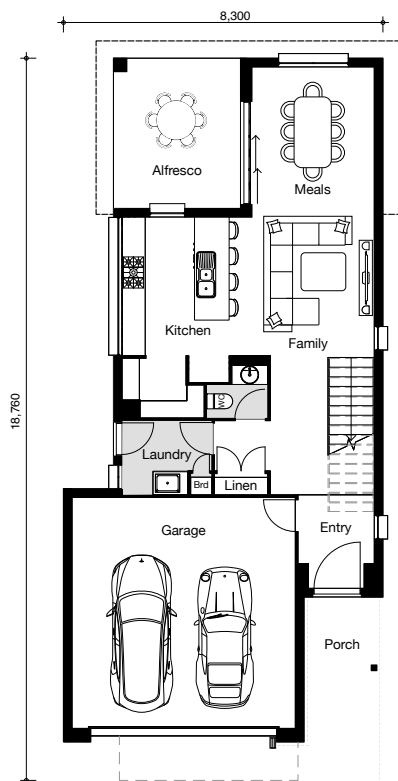
MODERN STREET APPEAL

The clever Milan design packs a huge punch for a narrow lot home! The creative use of space maximises living areas for an impressive family home that flaunts both style and functionality.

The Milan features open plan living downstairs with the gallery style kitchen positioned perfectly to be the centre of all entertainment. Opening onto the alfresco, the meals and family area are equipped with a powder room and plenty of accessible storage.

This design also encompasses an additional living area upstairs that overlooks the staircase and two voids or alternatively, the option is available to change the design to suit a larger family by having a fourth bedroom.

BRINGING CUSTOM HOME DESIGNS TO LIFE



“Customise our flexible floorplans”

OWNITHOMES.COM.AU

*This exclusive design is a product of Ownit Homes and is protected by copyright law. In accordance with Ownit Homes' policy of continued design improvement, we reserve the right to alter the plans, specifications and inclusions packages without prior notice. This floor plan is for illustration purposes only and does not form part of any contract. Ownit Homes QBCC #6479.

**OWNIT
HOMES**
EST.1972