



# Claremont

---



*Live your way!*





# Claremont

WIDTH: 10.80m

LENGTH: 21.47m

TOTAL: 388m<sup>2</sup>

5 3 2 3

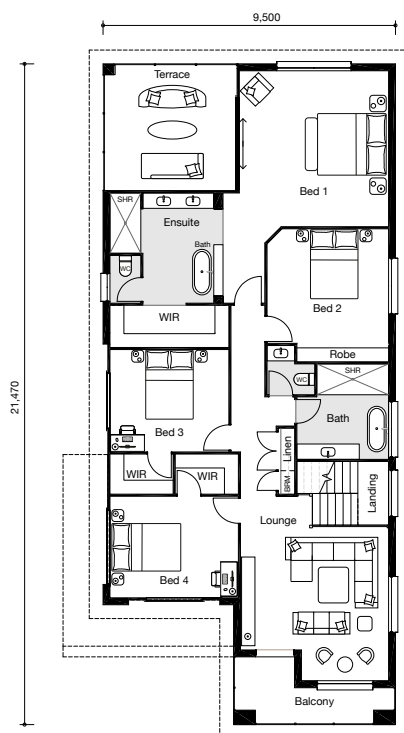
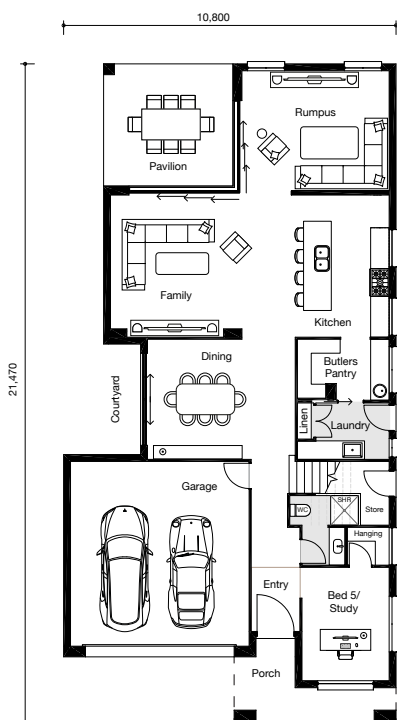
## PRESIDENTIAL LUXURY

Ideal for families, the Claremont boasts five bedrooms, three bathrooms, three living areas and two outdoor living areas. Combining luxury and practicality for day to day living, the Claremont really is a dream family home.

Influenced by a luxury presidential suite, the master bedroom features a large ensuite and walk-in robe and flows out on to an adjoining terrace making it the ultimate parents retreat. The front wing of the upper level includes three additional bedrooms, a main bathroom with separate WC and vanity and an additional lounge area with balcony.

Downstairs the kitchen is the heart of the home and is surrounded by a family, meals and separate rumpus room giving everyone plenty of space to relax and unwind.

BRINGING CUSTOM HOME DESIGNS TO LIFE



CLASSIC



ELITE



MODERN

**“Customise our flexible floorplans”**

OWNITHOMES.COM.AU

\*This exclusive design is a product of Ownit Homes and is protected by copyright law. In accordance with Ownit Homes' policy of continued design improvement, we reserve the right to alter the plans, specifications and inclusions packages without prior notice. This floor plan is for illustration purposes only and does not form part of any contract. Ownit Homes QBCC #6479.

**OWNIT  
HOMES**  
EST.1972